

LED BATTEN LIGHT WITH SENSOR- 14W

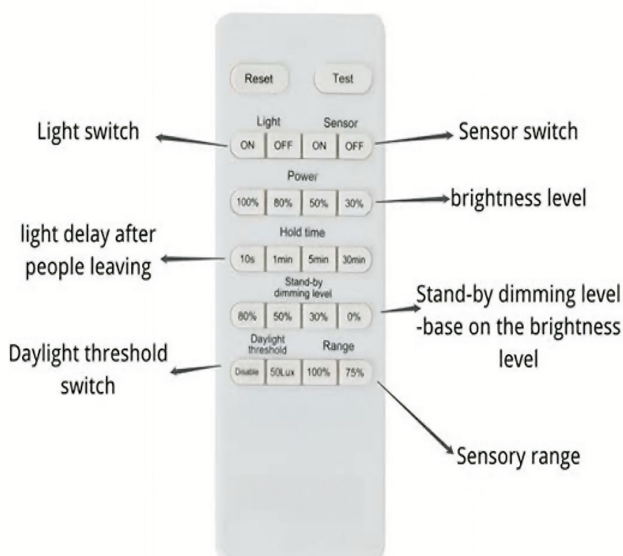
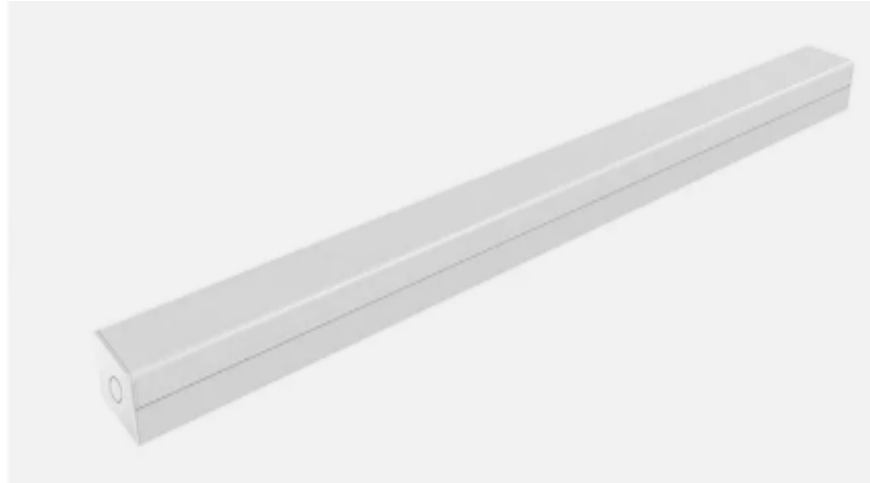
Model: RL-BL14W120S



LED Batten Lights with sensor is an indoor lightning which is suitable for multi-purpose applications such as parking lots, aisle, warehouse, supermarket, school, hospital, train station, airport terminal and others.

Product Features

- Microwave Motion Sensor
- Opal PC Diffuser
- Durable Metal Body
- Full range power input 220-240VAC
- 1170 x 83 x 72 mm
- 120° Beam Angle
- IP42



SPECIFICATION

Colour	(5000K)
Lumen (lm)	2,100Lm
Efficiency (Lm/w)	>150lm/w
LED Type	SMD 2835
CRI (%)	>80%
Beam Angle	120°
Power Requirement	AC 220~240 V
Power Consumption	14W
Sensor	Day Light & Microwave Motion Sensor
Power Factor	> 0.9
Operation Temperature	-20°C~+50°C
Dimension (mm)	1170 × 83 x 72 mm
Lamp Body Material	PC + SPCC
Protection Rating	IP42
Warranty	3 years